

## Quick Start Instructions

The VoiceArrest Speech Privacy System is a scalable, four-channel, "direct field," low-voltage electronic speech privacy/sound masking system, primarily installed in a dropped ceiling. For other applications, call Technical Support at 866-557-8438.

### Components Supplied: Control module:

1	Control Unit
1	UL rated modular power supply for control unit
1	Hole saw for drilling hole in ceiling
2 ea.	Screws and plastic anchors for wall mounting control unit
1	Infra-red remote control



**Emitter**

Emitter	Acoustic emitter for mounting in suspended ceiling
Includes	16 ft plenum-rated patch cable with RJ45 connectors

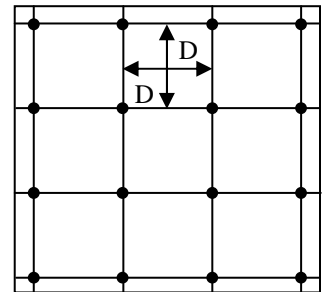
### Emitter/Control Module Layout and Installation.

**Open office layout:** It will be helpful to plan the layout on a drawing or sketch of the ceiling showing potential interfering elements such as light fixtures, air conditioning diffusers, sprinkler heads, etc.

**Table 1. Grid size vs. Ceiling Height**

Ceiling Height (ft)	Emitter Spacing, D (ft)
8	8
8.5	10
9	10
10	10
12	12
Other Height, H	H

Emitter spacing should be installed on a square grid (see sketch right). Grid dimensions should be according to Table 1. Any individual emitter can be moved up to 2' from this plan if its location corresponds to an interfering element.

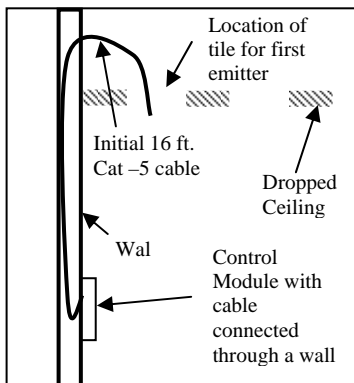


Plan the first row of emitters to be no less than 1 and no more than 5 feet from any adjacent wall.

**Enclosed office layout:** For enclosed offices up to 120 square feet in area, install two emitters per office within 1-1/2 to 2-1/2' of diagonal corners. For larger offices, install one additional emitter for each additional 75 sq. ft.

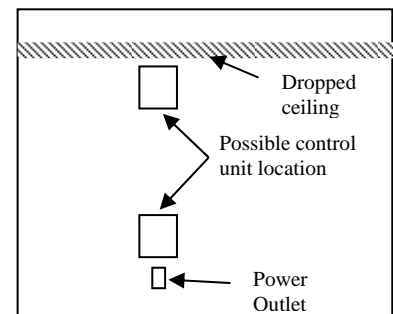
**Details of how to install the emitters in a dropped ceiling are shown on next page.**

**Control Module Installation:** Select a location for the control unit within 16 feet of the first emitter location (see sketch to left).



Mount the control module on the wall near a convenient AC power outlet. The sketch (right) of a typical wall elevation shows possible control module locations. Route an initial 16-foot cable from the ceiling location where the 1<sup>st</sup> emitter is to be installed to the location where the control unit will be permanently installed.

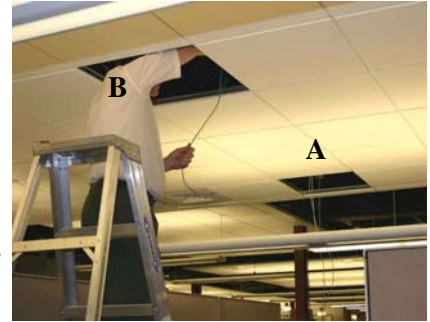
The cable can be dressed where it will be visible using a plastic, self-sticking wire channel such as those manufactured by Wiremold ([www.wiremold.com](http://www.wiremold.com)), or by pulling the cable down in the wall cavity to a hole drilled in the wall. This hole can be covered by the control module.



**For Additional Information on Layout and Installation call Technical Support: 866-557-8438.**

## Emitter Installation

**Step 1:** To install a emitter at location A. Assuming a sequence of emitters is being installed, remove a ceiling tile from the next emitter location, B.



**Step 2:** Throw a 16 ft. plenum cable back from Location B back to A. Location A now has two plenum cables, one from the previous location to it and one from B.

**Step 3:** Using a predrilled tile as a template, drill a hole in the tile from location A using the hole saw supplied.



**Step 4:** Install the Tile A emitter by pushing the emitter up through the drilled hole and slipping on and twisting the locking nut.



**Step 5:** Back on the ladder, plug the cable *from* the previous emitter location into the tile A emitter *input jack* and the cable going *to* location B into the emitter *output jack*.



**Step 6:** Replace Tile A to complete the installation.

